



Metro West

School Programs

GRADES PRE-K-12

2024 | 2025

massaudubon.org/schools



Mass Audubon School Programs

Through field studies and classroom explorations, Mass Audubon provides hands-on, inquiry based experiences with science content and practices. Our educators enhance students' scientific understanding of species and habitats; ecological concepts such as food webs, cycles, systems, adaptation, and evolution; climate change; and interrelationships between people and nature.

About Mass Audubon Metro West

The wildlife sanctuaries of Mass Audubon Metro West support science learning and the Massachusetts curriculum frameworks through hands-on and student-centered programs. A diverse array of habitats, landscapes, and agricultural operations offer ample opportunities to connect with nature and explore the relationship between people, wildlife, and the land.

Sanctuaries frequently visited by school groups include:

Drumlin Farm, Lincoln
Broadmoor, Natick
Habitat, Belmont

CONTACT INFORMATION

metrowesteducation@massaudubon.org
781-259-2220
massaudubon.org/metrowest

What's Inside

Our Wildlife Sanctuaries	1
Early Childhood & Elementary Programming	2
Science of Massachusetts.....	6
Middle & High School Programming	8
Waterways.....	8
Additional Programs	10
Afterschool Programs.....	10
Naturalist-in-Residence Program.....	10
iPlan: Mapping the Future	10
Pricing & Affordability	11
Professional Development for Educators	12

We Meet You Where You Are

Programs at your school, at our wildlife sanctuaries, or wherever nature is most accessible for you

Whether you want to bring nature into the classroom or take lessons outside, our programs offer insight into New England habitats and native species and enrich natural history and science lessons while strengthening students' connections to the environment.

Accessible Programs

Mass Audubon is committed to providing engaging, exciting, meaningful, and enduring educational programs, field trips, and learning activities for students with a broad range of physical, sensory, and learning needs.

Our educators strive to design and deliver adaptive programs that align to educational best practices and meet the needs of all students. The award-winning, ADA-compliant, interpretive All Persons Trails at many of our wildlife sanctuaries are open for all visiting school groups, providing access to wetland boardwalks, wildlife viewing areas, and gardens for birds, butterflies, and more.

We will gladly work with you to meet the needs of your classroom. For more information, please contact your local sanctuary.



Drumlin Farm Wildlife Sanctuary, Lincoln



Broadmoor Wildlife Sanctuary, Natick



Habitat Wildlife Sanctuary, Belmont

Our Wildlife Sanctuaries

Drumlin Farm Wildlife Sanctuary, Lincoln

At Drumlin Farm, you can experience life on a working farm and explore a wildlife sanctuary at the same time! This unique setting provides opportunities to delve into the interdependence of people, land, and wildlife. Visit pigs, sheep, goats, chickens, and cows in the farmyard; learn how crops are sustainably grown on-site; walk the trails to explore field, forest, and wetland habitat; and observe resident owls, hawks, and a fox in native wildlife exhibits.

Broadmoor Wildlife Sanctuary, Natick

An expansive retreat along Indian Brook and the Charles River, Broadmoor is an ever-changing environment teeming with wildlife: dragonflies darting, turtles basking, otters leaving tracks in the mud or snow, and more than 150 species of birds. Easy-to-moderate well-groomed trails lead you through the shade of mature woodlands into open fields and along the edges of streams, ponds, and marshland. Broadmoor's diverse landscape inspires exploration into the ecological value of aquatic ecosystems and the geologic processes that shaped the land.

Habitat Education Center & Wildlife Sanctuary, Belmont

Gentle trails wind through deciduous and evergreen forests, across meadows, and around ponds and vernal pools at Habitat, located just seven miles from downtown Boston. A long-standing center for environmental education, Habitat is an integral parcel of the Western Greenway, which connects 1,200 acres of open space in Waltham, Lexington, and Belmont, inviting people to reconnect with nature within this oasis of green. Examples of sustainability—including goats that help control invasive plants and a community garden with plots for rent—make this a great spot to learn about green practices while you explore.



Early Childhood & Elementary

Our Early Childhood and Elementary programs combine standards-aligned science content with the joy and excitement of learning about nature. We can bring the natural world to you through programs in your classroom, connect students to the ecology of their own schoolyard, or facilitate scientific exploration on a field trip at one of our wildlife sanctuaries.

Mass Audubon's Signature Program



Science of Massachusetts
A Mass Audubon Education Program

Science of Massachusetts is a multi-week curriculum for grades K-8 that will engage your students in exciting, hands-on, nature-based science right in their own schoolyard.

See page 6 for more details.



Additional Programs

Wild Tales

Pre-K-K | fall, winter, or spring
Single Program | 30 minutes, 45 minutes, or 1 hour



Listen to a favorite children's book and meet a wild character from the story! Learn about where the animal lives, what they eat, and their unique adaptations that help them to interact with their environment.

Locations: At your school

Habitats & Homes

Pre-K-K | fall, winter, or spring
Single program or series | One school visit (30 minutes, 45 minutes, or 1 hour) and/or one field trip (2 hours)

Choose either a single school-based program or field trip, or combine the two into a series.

Explore a natural area in your community or schoolyard as you look for tracks and other signs of native wildlife. Search for food, water, shelter, and space that supports the basic needs of the plants and animals that live here. On a visit to a wildlife sanctuary, explore field, forest, and wetland habitats as you look for tracks and other signs of native wildlife. Search for food, water, shelter, and space that support the basic needs of the plants and animals that live there.

Locations: Your school and/or any Metro West wildlife sanctuary

Early Childhood & Elementary

Additional Programs

Nature Detectives

Pre-K-K | fall, winter, or spring

Single or Series Program | 30 minutes, 45 minutes, or 1 hour //



Explore the mysteries of nature through the seasons, from the comfort of your classroom and/or schoolyard habitat. Students will use their senses, compare and contrast, and learn through movement activities and observations. This program can include a live animal.

Locations: At your school or a community greenspace

Life on the Farm

Pre-K-Grade 1 | spring

Single Field Trip | 2 hours

Field Trip: Explore fields, gardens, barns, and trails at your own pace as you experience life on a farm. Visit various hands-on, farm- and nature-based learning stations where you'll engage in daily farm activities and learn about the animals that live in New England. Program runs on specific dates.

Locations: Drumlin Farm Wildlife Sanctuary

Beneficial Insects

Grades K-2 | fall or spring

Single program or series | One school visit (45 min or 1 hour) and/or one field trip (2 hours)

Choose either a single school-based program or field trip or combine the two into a series.

At your school, head outside to search for insect habitats. Observe and learn how insects help plants by spreading pollen, eating pests, and breaking down materials in the soil.

On a field trip, look for insects that help plants in the fields, forests, and gardens. Observe how they use their bodies and investigate why insects pollinate flowers, eat plant pests, and break down materials in the soil that plants need to grow.

Locations: Your school and/or any Metro West wildlife sanctuary

Life in the Water

Grades K-2 | fall or spring

Single program or series | One school visit (30 minutes, 45 minutes, or 1 hour) and/or one field trip (2 hours)

Choose either a single school-based program or field trip, or combine the two into a series.

In the classroom, use scientific tools to investigate samples of aquatic life. Add a live wildlife visit to look at adaptations to habitat, explore an aquatic food web, or see life cycle stages.

In the field, use dip nets and other tools as you explore the unique life cycles of the organisms that live in the water and depend on wetland and upland habitats to survive.

Locations: Your school and/or any Metro West wildlife sanctuary

Wild Adaptations

Grades K-2 | fall, winter, or spring

Single Program | 30 minutes, 45 minutes, or 1 hour //



In the classroom, meet live wildlife to support learning about specific adaptation connections, such as coping with seasonal changes, life cycles, and stages of development. Or, take an in-depth exploration into the physical and behavioral adaptations of a particular group of animals.

Locations: Your school

Habitat Explorations

Grades 1-3 | fall, winter, or spring

Single program or series | One school visit (30 minutes, 45 minutes, or 1 hour) and/or one field trip (2 hours)

Choose either a single school-based program or field trip, or combine the two into a series.

Discover the amazing habitats, plants and wildlife found around your school or in your community. Search for the sources of food, water, shelter, and space that plants and animals need in order to successfully live there.

On a visit to a wildlife sanctuary, investigate field, forest, and wetland habitats to search for the sources of food, water, shelter, and space that plants and animals need in order to successfully live there. Observe similarities and differences in body parts, structures, behaviors, and functions as you learn what it means for wildlife to be adapted to their home.

Locations: Your school and/or any Metro West wildlife sanctuary

Animal Ambassadors

Our native, non-releasable animals give students the opportunity to experience up-close the rich variety of life found in Massachusetts.



Blue Jay icon indicates a program that can include animals.

Early Childhood & Elementary

Additional Programs

Soil Investigations

Grades 1–3 | fall, winter, or spring

Single program or series | One school visit (30 minutes, 45 minutes, or 1 hour) and/or one field trip (2 hours)

Choose either a single school-based program or field trip, or combine the two into a series.

What is soil made of? Compare different soil samples and investigate their properties using scientific tools. We can bring soil samples to you or we can explore soil near your school.

In the field, learn about how healthy soil supports healthy food and a healthy planet at Drumlin Farm or learn how soil holds secrets to the past at Broadmoor and Habitat.

Locations: Your school and/or any Metro West wildlife sanctuary (field trip theme varies by location)

Farm to Market

Grades 1–3 | fall, winter, or spring

Single program or series | One school visit (30 minutes, 45 minutes, or 1 hour) and/or one field trip (2 hours)

Choose either a single school-based program or field trip, or combine the two into a series.

We'll bring hands-on seasonal farm activities for your group to explore in class, such as planting seeds or carding sheared sheep's wool. On a field trip to Drumlin Farm, learn about growing crops and raising livestock, helping directly with fun farm chores. Chores may include planting, weeding, harvesting, or caring for farm animals. Schedule multiple visits to experience the farm in different seasons.

Locations: Your school and/or Drumlin Farm Wildlife Sanctuary

Solutions for the Effects of Wind & Water

Grade 2 | fall, winter, or spring

Single Program | 45 minutes or 1 hour

Manipulate different substrates with water and moving air to investigate the effects of wind and water, then work in teams to create and test solutions to prevent erosion.

Locations: Your school

Changing Landscapes

Grades 2–4 | fall, winter, or spring

Single program or series | One school visit (30 minutes, 45 minutes, or 1 hour) and/or one field trip (2 hours)

Choose either a single school-based program or field trip, or combine the two into a series.

Explore evidence of the short-term and long-term changes in the landscape around your school by examining signs of erosion and weathering, and glacial features if present.

On a field trip to a wildlife sanctuary, explore evidence of the short-term and long-term changes in the landscape by examining signs of erosion and weathering, glacial features, and soil composition.

Locations: Your school and/or any Metro West wildlife sanctuary

Wetland Communities

Grades 3–5 | fall or spring

Single program or series | One school visit (30 minutes, 45 minutes, or 1 hour) and/or one field trip (2 hours)



Choose either a single school-based program or field trip, or combine the two into a series.

Use scientific tools to investigate samples of aquatic life in a classroom wet-lab. Add a live wildlife visit to complete your exploration of wetland energy flow or adaptations. In the schoolyard or your community, use dip-nets and other tools as you explore the unique life cycles of the organisms that live in a water body in your community.

Field Trip: Use dip-nets and other scientific tools to explore wetland animals and their unique adaptations for living in water. Learn to identify specific organisms and understand the special characteristics of different water bodies and ecosystems.

Locations: Your school and/or any Metro West wildlife sanctuary



Additional Programs

Adaptations of Plants & Animals

Grades 3–5 | fall, winter, or spring

Single program or series | One school visit (30 minutes, 45 minutes, or 1 hour) and/or one field trip (2 hours)

Choose either a single school-based program or field trip, or combine the two into a series.

Explore your local environment to discover the amazing ways plants and animals use their unique adaptations to thrive—from behaviors to deal with changing seasons to structures for dispersing seeds—and more.

On a field trip to a wildlife sanctuary, explore a combination of field, forest, or wetland habitats to discover the amazing ways plants and animals use their unique adaptations to thrive, such as behaviors to deal with changing seasons, structures to disperse seeds, or body parts to hunt underwater.

This program can focus on animals, plants, or both. Consider adding additional visits to compare different seasons.

Locations: Your school and/or any Metro West wildlife sanctuary

Habitats & Adaptations

Grades 3–5 | fall, winter, or spring

Single Program | 30 minutes, 45 minutes, or 1 hour

Meet live wildlife as you compare their physical and behavioral adaptations and how these relate to their roles within an ecosystem. Learn where they live and how climate change may be affecting them. This program can focus on an animal group, habitat, energy flow, or seasonal adaptations.

Locations: Your school



Science of Food & Farming

Grades 4–5 | fall, winter, or spring

Single Field Trip | 2, 3, or 4 hours

Working directly in fields and barns, explore the challenges of growing food and how it connects with climate change. Depending on the season, participate in farm chores such as planting, weeding, harvesting, mucking, or feeding animals.

Locations: Drumlin Farm Wildlife Sanctuary



A Year-long Program to Discover and Protect Your Local Watershed

In the Waterways program, students (grades 5–12) and teachers partner with Mass Audubon educators to explore, research, and take action in their local watershed, learning to recognize the importance and interconnectedness of watershed systems, from Waterways.

Units available for grades 5–12. Learn more on page 8.

Soil Science

Grades 4–5 | fall, winter, or spring

Single program or series | One school visit (30 minutes, 45 minutes, or 1 hour) and/or one field trip (2 hours)

Choose either a single school-based program or field trip, or combine the two into a series.

Dig into a classroom soil-lab with samples brought by our staff, analyzing the composition and properties to understand soil's function in local ecosystems and determine its health. Learn how healthy soil can support a resilient climate.

On a trip to a wildlife sanctuary, compare soil from field, forest, and wetland habitats, analyzing the composition and properties to understand its function in local ecosystems and determine its health. Learn how healthy soil can support resilient climate, and (at Drumlin Farm only) how it supports healthy food too.

Locations: Your school and/or any Metro West wildlife sanctuary (field trip theme varies by location)



Science of Massachusetts

Science of Massachusetts (SOM) is a multi-week curriculum for grades K-8 that will engage your students in exciting, hands-on, nature-based science right in their own schoolyard. This is a wonderful way to help your students get outside for a healthy dose of nature, even when field trips are not possible.

Curriculum Overview

Tightly aligned to the Massachusetts Science Curriculum Frameworks, SOM takes K-8 students on a deep dive into science concepts through inquiry-based, outdoor learning. Students will complete field journaling assignments and investigations that help them develop important science practices and be invited to find their place in nature and impact their world, whether they live in an urban, suburban, or rural community.

This program is offered in a unique format. Each unit is designed as a series, with one lesson completed over the course of a week. Each lesson includes:



An engaging, short **video** that introduces the lesson topic and can be viewed in the classroom or as homework.



An outdoor **field journaling** assignment led by the classroom teacher, inviting students to connect with nature through place-based, hands-on science learning.



A Mass Audubon-led **sensemaking session**, which allows time for students to deepen their understanding of science concepts and engage in science practices together.



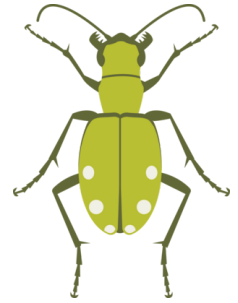
Support is available for districts with financial challenges, and our curriculum is designed to be accessible to all learners. Training is available to support teachers implementing the curriculum for the first time.

Grades K–2

Soil Science: Where the Minibeasts Are

5-week series

In this unit, we will explore different types of "minibeasts" or invertebrates, like worms, pill bugs, and millipedes. Students will engage in outdoor investigations to find out where the best place is for a minibeast to live, then document their observations in field journals and use evidence to explain how different schoolyard habitats may or may not support the needs of invertebrates. Finally, students will expand their investigation to understand how humans can learn from minibeasts to protect their local environment.



Rooted in Science: Trees!

7-week series

Trees provide much more than shade or pretty additions to city streets and neighborhood parks. This unit explores habitats, adaptations, and life cycles, with trees as a unifying theme. With accessibility to all learners as a priority, lessons highlight the diversity of trees across various Massachusetts habitats, including suburban, urban, and rural areas.

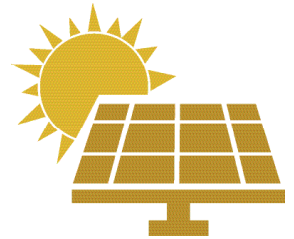


Grades 3–5

Energy on Earth

7-week series

Learn how energy from the sun powers life on Earth, both living processes and the technologies we use to power our communities. Each lesson explores one aspect of the energy cycle within biotic and abiotic systems, including photosynthesis, consumers, decomposers, and renewable and non-renewable energies.



Stronger Storms: Taking Action for Community Resilience

6-week series

In this unit, students will get outside and investigate the ways stronger storms impact their communities, specifically through rain and snow. They will identify places of vulnerability and places of resilience in their schoolyard or neighborhood. As a culminating project, they will design solutions to help reduce the impacts of stronger storms in their area and communicate it with members of their community.



Grades 6–8: Climate of Massachusetts

Rooted in Solutions: Trees & Climate Change

7-week series

Are trees the solution to climate change? Through place-based, inquiry-driven investigation, students will study the role of trees in the carbon cycle. Then, they'll expand their investigation to find out whether forest sequestration (or any single nature-based climate solution) is enough to fight climate change. Finally, students will explore their own role as a changemaker by planning a collective, climate-positive action.



► Learn more about Science of Massachusetts at massaudubon.org/som.



Middle & High School

Our Middle and High School programs make science content relevant and exciting through hands-on, place-based lessons that will support your life and earth science curricula. We offer standards-aligned programs that are based at your school, at our wildlife sanctuaries, or a combination of both.

Mass Audubon's Signature Program



Waterways

Waterways (Rivers to Sea) is a year-long program in which students and teachers (grades 5-12) partner with Mass Audubon educators to explore, research, and take action in their local watershed.

Through this program, students will learn to recognize the importance and interconnectedness of watershed systems, from Waterways. They will also delve into the impact of human activities on watersheds, both positive and negative. At the heart of this STEM-focused program is student involvement in community action projects that will contribute to the improvement of watershed and public health, building their sense of self-efficacy and agency to effect positive change in their local communities.

School educators who participate in Waterways with their students will work with Mass Audubon educators over the course of a year or more to strengthen their skills and confidence in integrating watershed topics into their curriculum, both in the outdoors and in their classrooms.

Together, we will support student-involved community action projects and help school educators build a support network with their local watershed organizations and other community stakeholders.



Middle & High School

Additional Programs

Ecosystem Dynamics

Grades 6–8 | fall or spring
Single Field Trip | 2, 3, or 4 hours

Explore patterns of change for the different communities in the temperate biome: fields, forest, and wetlands. Identify how organisms relate with one another (predation, mutualism, competition, dependency, and parasitism) and revisit how organisms are adapted to their environment and how energy moves through trophic levels.

Locations: Broadmoor Wildlife Sanctuary or Habitat Education Center

Ecological Issues & Our Changing Climate

Grades 6–8 | fall or spring
Single Field Trip | 2, 3, or 4 hours

Learn how our local ecosystems are changing over time and how the ways humans live are impacting our climate. What is the balance between Earth's limited resources and our basic needs? Explore how wildlife sanctuary staff manages the land and positive, climate-friendly changes that can be made in our communities.

Locations: Any Metro West wildlife sanctuary

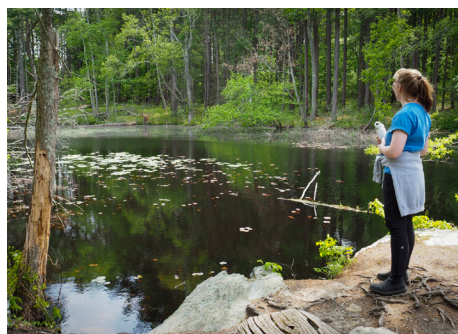
Freshwater Ecology

Grades 6–8 | fall or spring
Single program or series | One school visit (30 minutes, 45 minutes, or 1 hour) and/or one field trip (2 hours)

Choose either a single school-based program or field trip, or combine the two into a series.

In the classroom, explore samples from freshwater ecosystems hands-on and under microscopes, focusing on your choice of biotic and abiotic factors, evolution and adaptation, biotic health indicators, organism identification, or vulnerabilities to climate change. Take a field trip to a wildlife sanctuary where you'll observe animal and plant life that live in freshwater ponds, streams, marshes, rivers, or vernal pools.

Locations: Your school and/or any Metro West wildlife sanctuary



Farm Ecology

Grades 6–12 | fall, winter, or spring
Single Field Trip | 2, 3, or 4 hours

Delve into the ecology of a working farm, exploring its energy, life cycles, and ecological issues. What does it take to manage healthy soil and protect habitats for a resilient climate, or raise animals and crops for market? Participate in seasonal farm chores such as feeding, mucking, planting, harvesting, and weeding.

Location: Drumlin Farm Wildlife Sanctuary

Climate Ambassadors

Grades 6–12 | fall, winter, or spring
Single Program | 45 minutes or 1 hour



Meet live wildlife ambassadors and explore how humans are impacting native species and the habitats on which they depend. Explore what we can do at home and in our communities to protect local ecosystems and support biodiversity for climate resiliency.

Location: Your school

River Schools

Grades 5–8 | fall through spring
8-program Series

Through hands-on learning in the classroom and in the field, students connect with and build an understanding of watersheds as complex ecosystems, learn about climate change and how it impacts a watershed, and develop and implement action plans to mitigate a climate-related problem they identify. Over a 3-year cycle, teachers participate in professional development, learn to facilitate programs on their own, and eventually serve as mentors for new teachers.

Locations: Your school and various local watershed destinations



Additional Programs

Afterschool Programs

Enrich your afterschool program with a nature-based option that will get students outdoors to explore, have fun, and practice age-appropriate science skills in their own schoolyard. Whether you have access to asphalt and a few trees, a school garden, or a full forest, we will help your students connect with the diversity and wonder of the natural world.

Environmental Explorers

Available for grades K–8

Designed for groups of 12–15 students, Environmental Explorers is a weekly afterschool offering that connects students in grades K–8 to nature wherever they are.

Each week, students dig into a new topic while building science practices and naturalist skills. When possible, lessons will bring students outside and use whatever environment is readily available.

Environmental Leaders Club

Available for grades 6–12

This year-long, project-based afterschool program engages youth in learning about environmental issues affecting their own community and developing solutions that will make an impact.

Students will participate in hands-on, nature-based learning; practice communication, leadership, and teamwork skills; meet adults in environmental careers; and give back to their community.

Naturalist-in-Residence

Available for all grade levels (Pre-K–12)

Get students outdoors and exploring the natural world right outside of their school doors. Every visit with your Mass Audubon Naturalist-in-Residence will engage students in a hands-on, inquiry-based science lesson.

Our staff will work alongside school teachers to integrate these lessons into the science, literacy, ELL, arts, or other curriculum for any grade level. Frequency of visits can vary from weekly to monthly.

iPlan: Mapping the Future

iPlan is a free online game that allows learners to construct, investigate, and solve simulated urban and regional planning problems. Using real geospatial, ecological, and economic data, iPlan transforms any location in the contiguous United States into an interactive land-use planning simulation.

Middle and high school students can design and test rezoning plans that address socioeconomic and environmental challenges and their plans are evaluated by virtual stakeholders who advocate for different community priorities.

Learn more and start playing at i-plan.us.





Pricing & Affordability

Mass Audubon is committed to providing inclusive and equitable access to nature. Our school programs are designed to be accessible to as many schools, educators, and children as possible. If cost is a barrier for your students or school, please contact us—financial aid is available for schools with a high percentage of low-income students and we offer discounts for multiple visits.

Field Experience Pricing

Field trip programs that take place at Mass Audubon wildlife sanctuaries are priced at an hourly flat rate for groups of 15 or fewer students. Larger groups will be broken into smaller groups of no more than 15 per Mass Audubon educator. Small group sizes enable us to provide each student with a high-quality experience and individualized attention.

	1.5 Hours	2 Hours	2.5 Hours	3 Hours	3.5 Hours	4 Hours
First group (up to 15)	\$180	\$210	\$240	\$275	\$315	\$360
Additional groups of 15	\$155	\$185	\$215	\$250	\$285	\$330

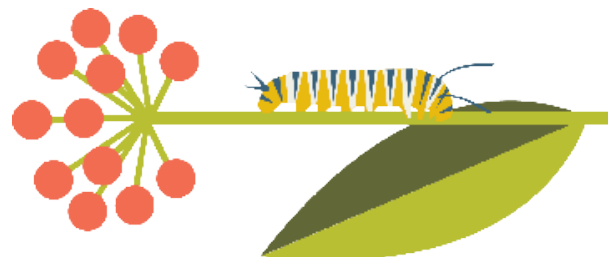
School-based Program Pricing

Programs for which our educators travel to your school are priced at an hourly rate for the entire class, up to 30 students. Additional fees apply for travel, based on the mileage from the wildlife sanctuary of origin. There is a two-session minimum for booking 30- and 45-minute programs.

Special rates may apply for certain programs that require additional staff, prep time, or materials costs. Please contact us for more information.

	30* minutes	45* minutes	60 minutes
Per class rate (~25 people)	\$135	\$195	\$225

*Minimum of two sessions required to book a program of this length





Professional Development

Mass Audubon's Professional Development programs are designed to increase content knowledge, provide teachers with hands-on, STEM-focused learning experiences, and offer resources for teaching engaging, inquiry-based science lessons in the schoolyard or classroom. In-person and virtual workshops are available, along with consulting and site visits.

For more information, visit massaudubon.org/pd or contact education@massaudubon.org.

Early Education Workshops

Time spent in nature with young children is time well-spent: Research from the Children & Nature Network demonstrates that having regular opportunities to learn outdoors in early childhood has lasting benefits for children's physical, emotional, and academic growth.

Mass Audubon's professional development workshops are designed to help early educators build skills and confidence for teaching all curriculum areas outdoors! Both in-person and virtual options are available.

Workshop topics include:

- Nature and Social-Emotional Learning
- Art and Music Outdoors
- Nature-Inspired Language and Literacy
- Early Science Literacy
- Math in Nature
- Fine and Gross Motor Development
- Bringing Nature Inside
- Safety Management and Weather
- Farm to School (Cooking and Gardening)

To book an Early Education professional development workshop or series, contact earlyed@massaudubon.org.

SEEDS

Seasonal Early Education Discovery & Science

Mass Audubon's year-long Seasonal Early Education Discovery and Science (SEEDS) program is designed to build school-wide capacity for introducing students to the natural world.

Using a modeling-coaching-mentoring model, we partner with schools to create rich, nature-based learning opportunities that fit smoothly within the existing curriculum of the school. At the end of a year, teachers will have the skills to make nature a regular part of their daily curriculum and will be excited for leading effective lessons outdoors.

Visit massaudubon.org/earlyed to learn more.



Kindergarten–Grade 12 Workshops

Mass Audubon’s professional development programs for K-12 educators are designed to increase content knowledge, provide teachers with hands-on, STEM-focused learning experiences, and offer resources for teaching engaging, inquiry-based science lessons in the schoolyard or classroom. Both in-person and virtual options are available.

Workshop topics include:

- Bringing Learning Outdoors
- Field Journaling
- Inquiry-based Schoolyard Science
- Teaching Climate Change
- Climate Justice in your Community
- Watershed Science

To book a K-12 professional development workshop or series, contact education@massaudubon.org.

Summer Institute Nature School for Teachers

In this week-long intensive, K-8 science teachers will immerse themselves in local habitats and meaningfully connect with the science practices embedded in the Massachusetts Science Frameworks.

Practice inquiry-based learning methods through hands-on exploration of local habitats, field research, and an investigation design process you can bring back to your classroom.

Additional Support Services

Consulting

Mass Audubon will support you in designing nature-based activities that fit into your existing curriculum. Consulting can be done in-person or virtually. Contact us to learn more about how we can support you with individualized curriculum support or custom professional development.

Site Visits

Our teacher naturalists will help you make the most of your outdoor schoolyard for learning, whether it’s in an urban, suburban or rural setting. After the visit we will produce a report with suggestions and ideas for topics and activities that will work well in your space. Each visit includes a complete write-up with notes.

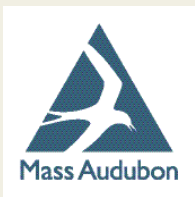
Contact education@massaudubon.org to learn more.





Find Your Sanctuary

Find a place to explore at massaudubon.org



Mass Audubon Mass Audubon is the largest nature-based conservation organization in New England. Founded in 1896 by two women who fought for the protection of birds, Mass Audubon carries on their legacy by focusing on the greatest challenges facing the environment today: the loss of biodiversity, inequitable access to nature, and climate change.

With the help of our 160,000 members and supporters, we protect wildlife, conserve and restore resilient land, advocate for impactful environmental policies, offer nationally recognized education programs for adults and children, and provide endless opportunities to experience the outdoors at our wildlife sanctuaries. Explore, find inspiration, and take action at massaudubon.org.