









Massachusetts Audubon Society, Endicott Center, Long Range *Phragmites* Study

Location: PRNWR

Transect 3\*

MOWED 10/01

Observers and dates

Tide gates open 2001 and 2002 and 2005 Nicholson and grade 6

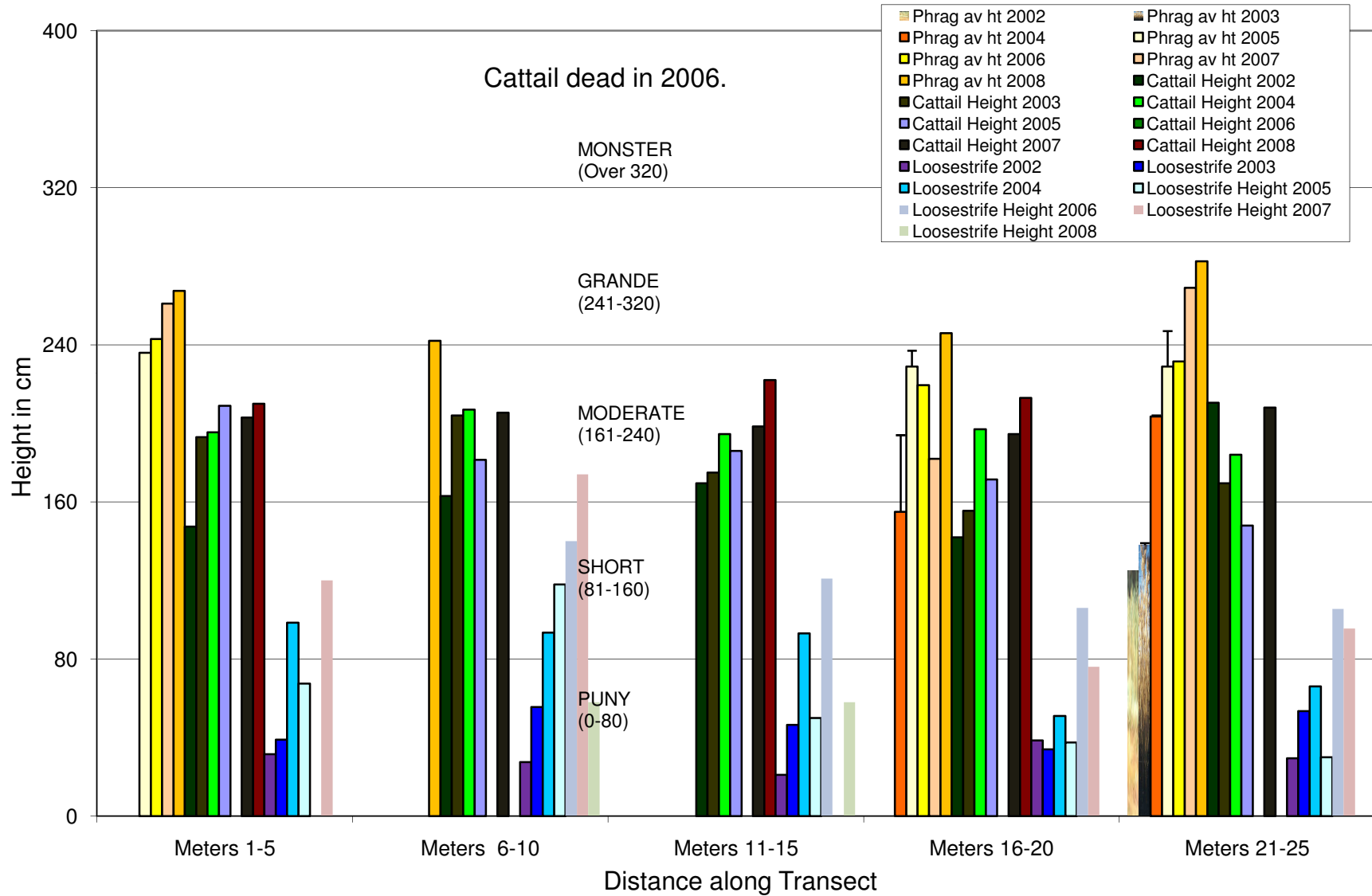
June-July 2003. Gates closed 2004 and 2005

SPECIES		1 METER SEGMENTS																									# of intervals present in
		1	2	3	4	5	6	7	8	9	10	11	12	13	14	15	16	17	18	19	20	21	22	23	24	25	
<i>Phragmites</i>	2005	█	█	1	1	1	1	█	█	█	█	█	█	█	█	█	█	█	█	█	█	█	█	█	█	█	25
	2006																										0
	2007	█	█	█	█	█	█	█	█	█	█	█	█	█	█	█	█	█	█	█	█	█	█	█	█	█	0
Cattail	2005	█	█	█	█	█	█	█	█	█	█	█	█	█	█	█	█	█	█	█	█	█	█	█	█	█	25
	2006																										0
	2007																										0
Purple Loosestrife	2005	█	█	█	█	█	█	█	█	█	█	█	█	█	█	█	█	█	█	█	█	█	█	█	█	█	25
	2006																										0
	2007																										0

\*Location: We created this transect to do with students in 2005 because the North Pool area is ponded. It runs from the sign "3" on the boardwalk south. So "0" is at the sign and 25 is far from it.

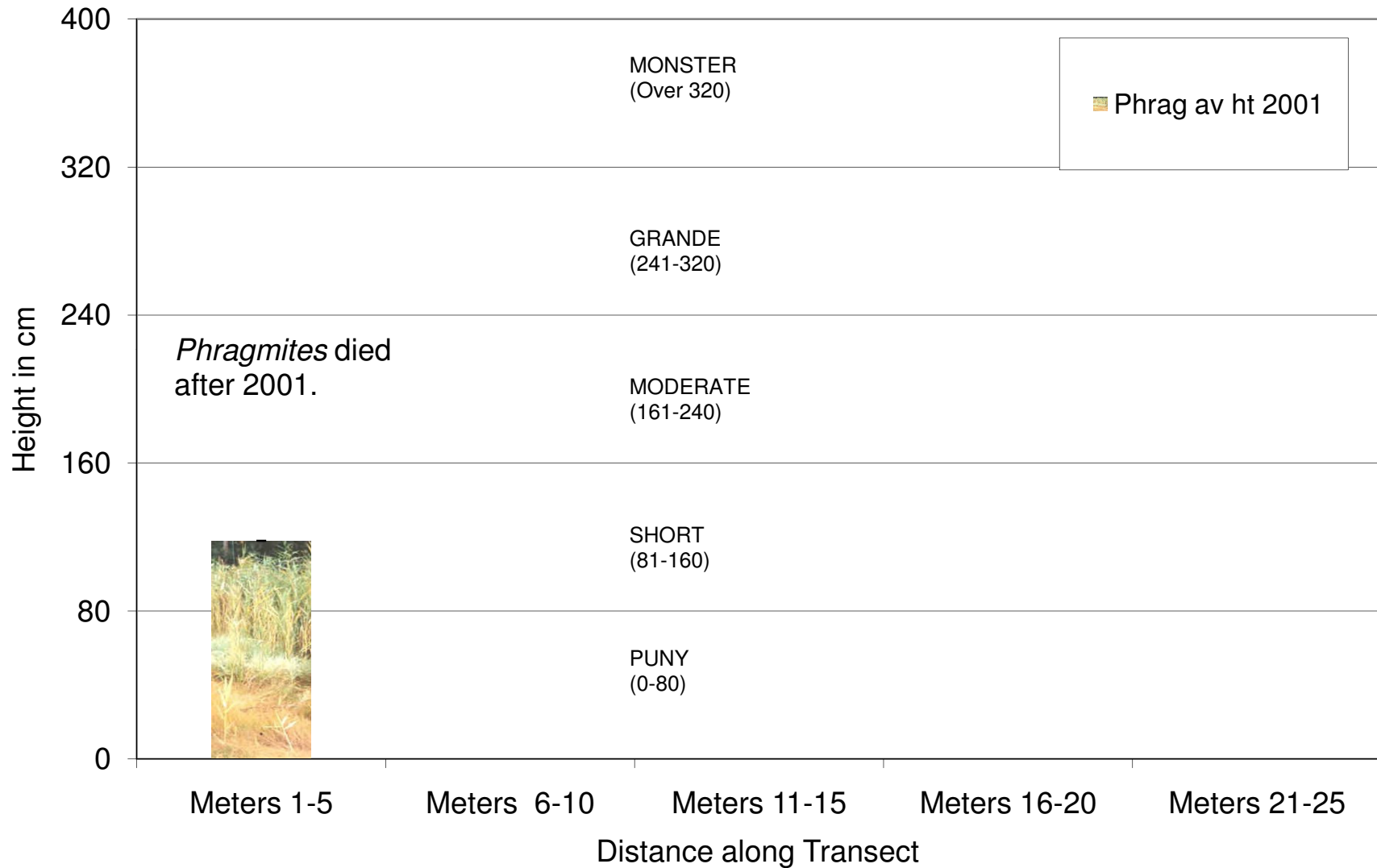
Cattail and loosestrife hts not recorded.

**Phragmites, Cattail and Purple Loosestrife Heights, T 0,  
Parker River National Wildlife Refuge**



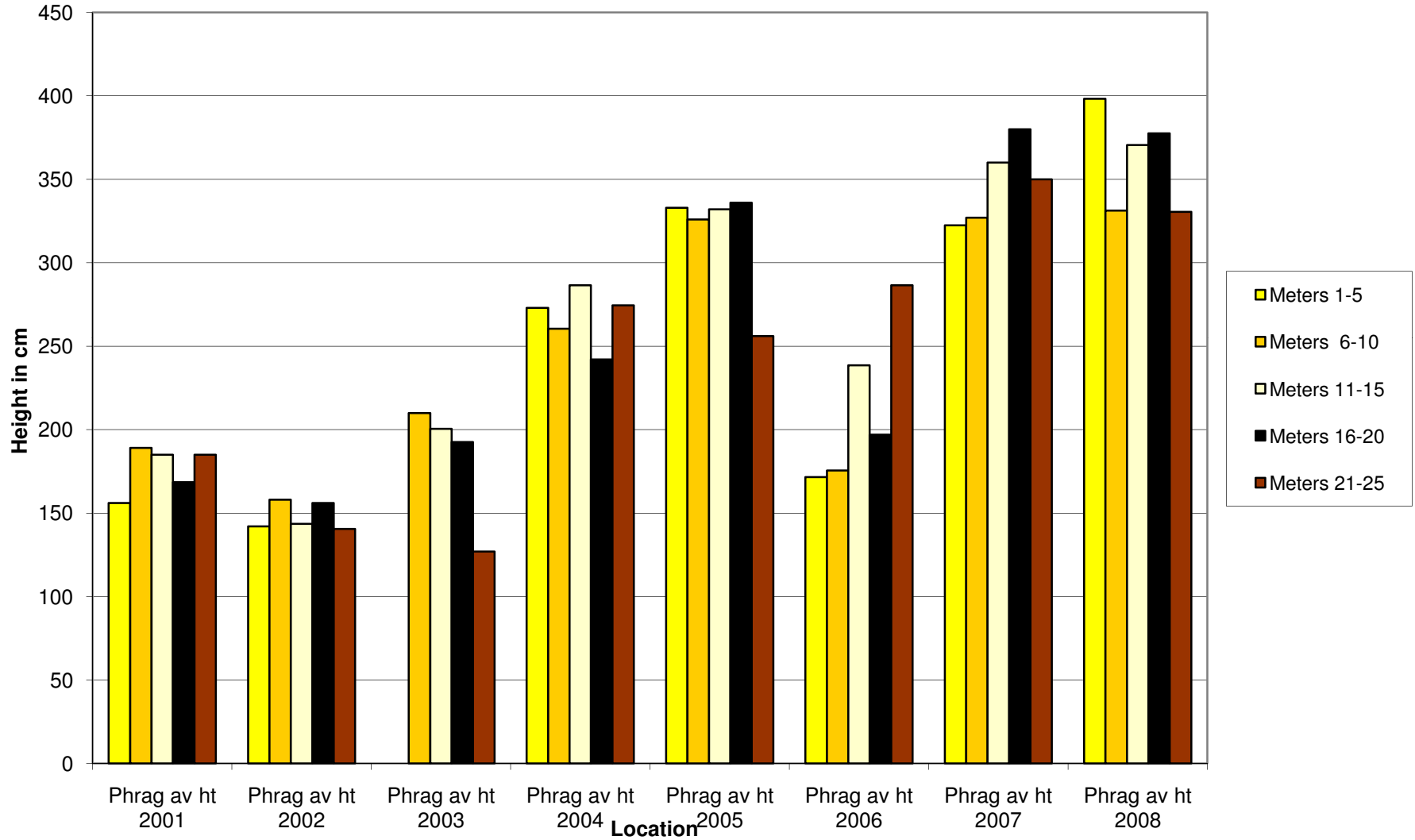
***Phragmites* Heights, T 2 (downstream of berm),  
Parker River National Wildlife Refuge**

2001-2008



### Transect 1 *Phragmites* Heights 2001-2008

Yellows= Tide gates opened.



## PRNWR T1 Phragmites and Cattail Height comparison

