

2002-2006 Long Range Phragmites Study
 Massachusetts Audubon Society, Endicott Center
 Location: Danvers: Osram Sylvania

1 METER SEGMENTS
 Transect 1 - distribution of species

Transect 1

Clay Soil under peat
 SPECIES

1=Present (D= Dead)

9 Species

?= Late in season identification

1998 12/7/98 Duff
 1999 8/25/99 Duff & Mowry
 2000 11/7/00 Duff
 2001 12/27/01 Duff

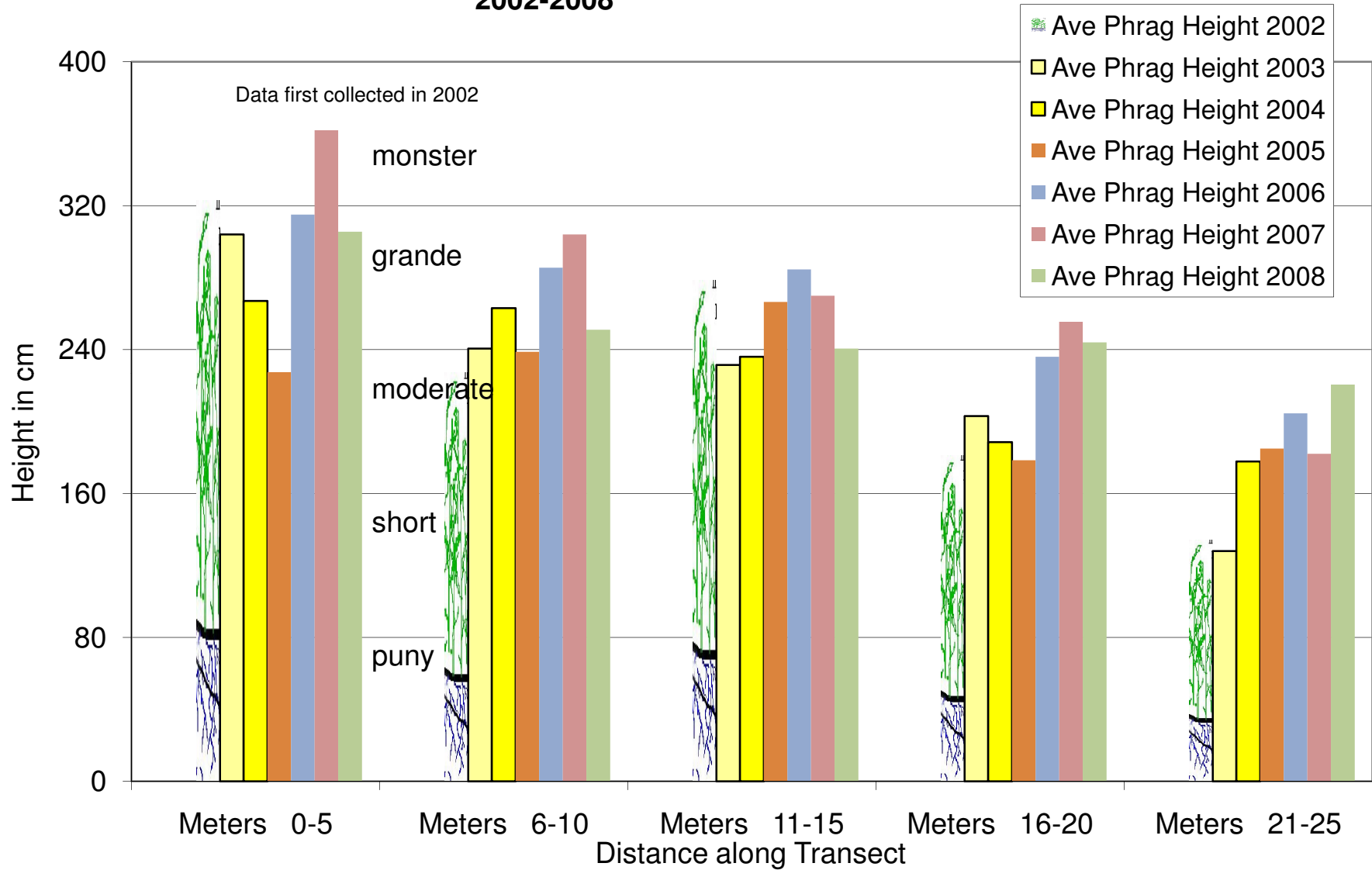
plants=10
 2004 Duff and Essex Aggie 9/21 08 Duff and HRI
 2005 Duff and Essex Aggie 9/26
 2006 Duff 10/3

upland end 1 METER SEGMENTS marsh end

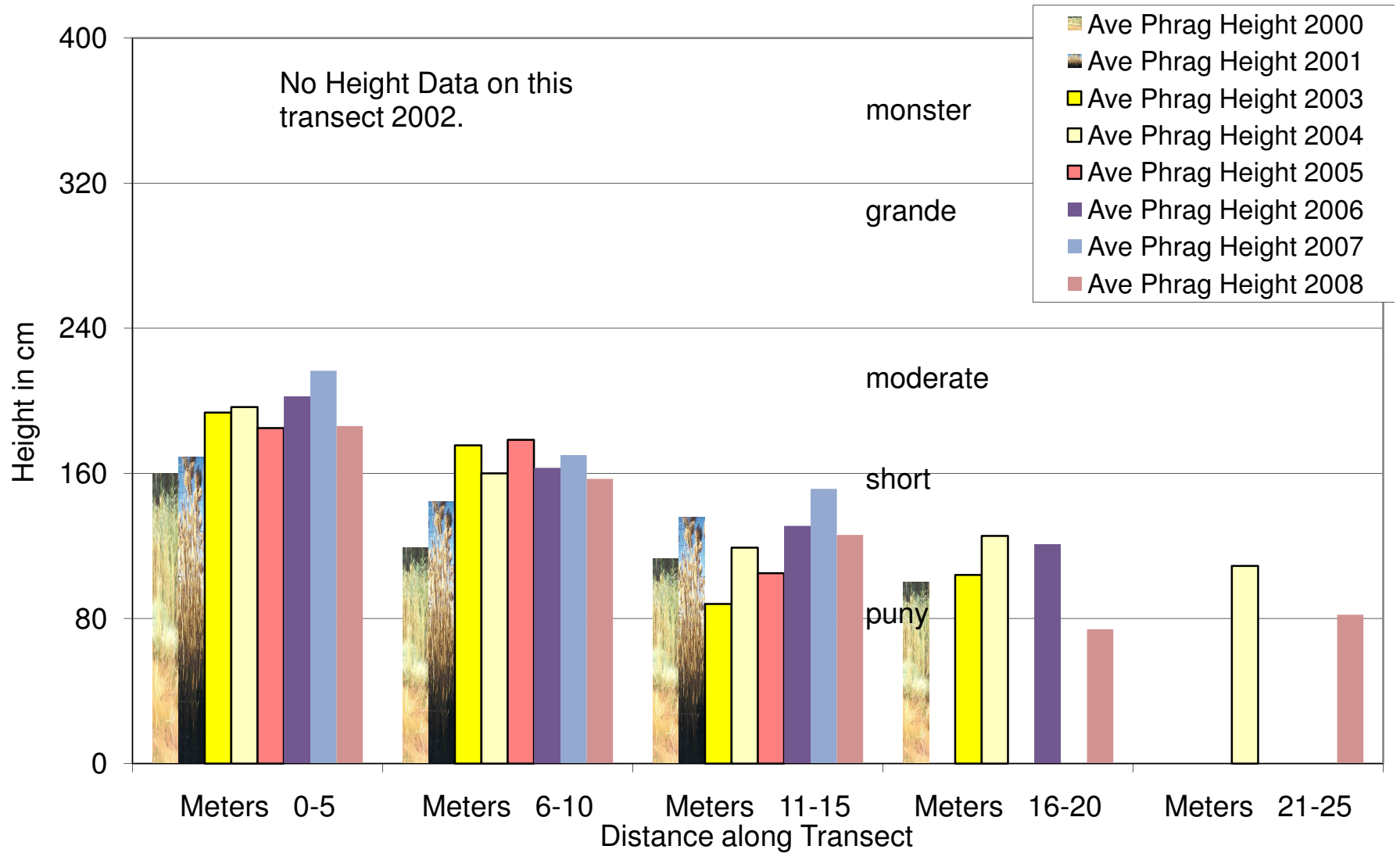
Species	Year	1 METER SEGMENTS																									# of int present
		1	2	3	4	5	6	7	8	9	10	11	12	13	14	15	16	17	18	19	20	21	22	23	24	25	
Phragmites <i>Phragmites australis</i>	S 1998	1	1	1	1	1	1	1	1	1	1	1	1	1	1	1	1	1	1	1	1	1	1	1	1	1	17
	F 1998	1	1	1	1	1	1	1	1	1	1	1	1	1	1	1	1	1	1	1	1	1	1	1	1	1	18
	1999	1	1	1	1	1	1	1	1	1	1	1	1	1	1	1	1	1	1	1	1	1	1	1	1	1	15
	2000	1	1	1	1	1	1	1	1	1	1	1	1	1	1	1	1	1	1	1	1	1	1	1	1	1	10
	2001	1	1	1	1	1	1	1	1	1	1	1	1	1	1	1	1	1	1	1	1	1	1	1	1	1	15
	2002	1	1	1	1	1	1	1	1	1	1	1	1	1	1	1	1	1	1	1	1	1	1	1	1	1	14
	2003	1	1	1	1	1	1	1	1	1	1	1	1	1	1	1	1	1	1	1	1	1	1	1	1	1	13
	2004	1	1	1	1	1	1	1	1	1	1	1	1	1	1	1	1	1	1	1	1	1	1	1	1	1	19
	2005	1	1	1	1	1	1	1	1	1	1	1	1	1	1	1	1	1	1	1	1	1	1	1	1	1	11
	2006	1	1	1	1	1	1	1	1	1	1	1	1	1	1	1	1	1	1	1	1	1	1	1	1	1	16
	2007	1	1	1	1	1	1	1	1	1	1	1	1	1	1	1	1	1	1	1	1	1	1	1	1	1	14
2008	1	1	1	1	1	1	1	1	1	1	1	1	1	1	1	1	1	1	1	1	1	1	1	1	1	20	
2009																										0	
Sea Blite <i>Suaeda linearis</i>	S 1998																										0
	F 1998																										0
	1999																										8
	2000																										1
	2001																										0
	2002																										7
	2003																										1
	2004																										5
	2005																										13
	2006																										3
2007																										5	
2008																										0	
2009																										0	
Spikegrass <i>Distichlis spicata</i>	S 1998	1	1	1	1	1	1	1	1	1	1	1	1	1	1	1	1	1	1	1	1	1	1	1	1	1	16
	F 1998	1	1	1	1	1	1	1	1	1	1	1	1	1	1	1	1	1	1	1	1	1	1	1	1	1	25
	1999	1	1	1	1	1	1	1	1	1	1	1	1	1	1	1	1	1	1	1	1	1	1	1	1	1	24
	2000	1	1	1	1	1	1	1	1	1	1	1	1	1	1	1	1	1	1	1	1	1	1	1	1	1	23
	2001	1	1	1	1	1	1	1	1	1	1	1	1	1	1	1	1	1	1	1	1	1	1	1	1	1	25
	2002	1	1	1	1	1	1	1	1	1	1	1	1	1	1	1	1	1	1	1	1	1	1	1	1	1	25
	2003	1	1	1	1	1	1	1	1	1	1	1	1	1	1	1	1	1	1	1	1	1	1	1	1	1	25
	2004	1	1	1	1	1	1	1	1	1	1	1	1	1	1	1	1	1	1	1	1	1	1	1	1	1	20
	2005	1	1	1	1	1	1	1	1	1	1	1	1	1	1	1	1	1	1	1	1	1	1	1	1	1	12
	2006	1	1	1	1	1	1	1	1	1	1	1	1	1	1	1	1	1	1	1	1	1	1	1	1	1	25
2007	1	1	1	1	1	1	1	1	1	1	1	1	1	1	1	1	1	1	1	1	1	1	1	1	1	25	
2008	1	1	1	1	1	1	1	1	1	1	1	1	1	1	1	1	1	1	1	1	1	1	1	1	1	24	
2009																										0	
Black grass <i>Juncus gerardii</i>	S 1998																										22
	F 1998																										20
	1999																										22
	2000																										17
	2001																										19
	2002																										17
	2003																										2
	2004																										17
	2005																										15
	2006																										21
2007																										20	
2008																										11	
2009																										0	
Saltmarsh Hay <i>Spartina patens</i>	S 1998																										0
	F 1998																										10
	1999																										0
	2000																										6
	2001	?	?	?	?	1	1	1	1	1	1	1	1	1	1	1	1	1	1	1	1	1	1	1	1	1	10
	2002	1	1	1	1	1	1	1	1	1	1	1	1	1	1	1	1	1	1	1	1	1	1	1	1	1	24
	2003	1	1	1	1	1	1	1	1	1	1	1	1	1	1	1	1	1	1	1	1	1	1	1	1	1	18
	2004	1	1	1	1	1	1	1	1	1	1	1	1	1	1	1	1	1	1	1	1	1	1	1	1	1	23
	2005	1	1	1	1	1	1	1	1	1	1	1	1	1	1	1	1	1	1	1	1	1	1	1	1	1	25
	2006	1	1	1	1	1	1	1	1	1	1	1	1	1	1	1	1	1	1	1	1	1	1	1	1	1	17
2007	1	1	1	1	1	1	1	1	1	1	1	1	1	1	1	1	1	1	1	1	1	1	1	1	1	23	
2008	1	1	1	1	1	1	1	1	1	1	1	1	1	1	1	1	1	1	1	1	1	1	1	1	1	21	
2009																										0	

is immature

Average *Phragmites* Heights, Transect 0, Osram Sylvania, Danvers 2002-2008



Average *Phragmites* Heights, Transect 1, Osram Sylvania, Danvers
2000-2006



Average *Phragmites* Heights, Transect 3, Osram Sylvania, Danvers
2001-2008

